

*A guide to living in
Downtown Providence.*

THE RESIDENCES

PROVIDENCE

DECEMBER 2011 NEWSLETTER



A photo taken by a Resident from 25th floor

Inside this issue:

Bank of America City Center	2
New Restaurants Downtown	2
What's Happening in the City	4
Providence City Hall Tree Lighting	4
Floor plan of the Month	5
Free Holiday Parking	5
Downtown Goes Red for National AIDS Day	6
2011 Holiday Season	7

Call Meredyth Church or Bob Walsh

today for more information or to schedule a private tour:

401 598 8282

***The Staff from The Residences wishes you a very Happy
Holiday Season!***



THE RESIDENCES
PROVIDENCE

BANK OF AMERICA CITY CENTER IS OPEN

The 14,000-square-foot skating rink is twice the size of Rockefeller Plaza's ice rink in New York City!

Public Skating Schedule 2011 / 2012 Season

November 24th, 2011 – March 18th, 2012

Monday - Friday 10am to 10pm

Saturday and Sunday 11am to 10pm

Public Skating Pricing

Adults \$6.00 and Children (12 and under) \$3.00



NEW RESTAURANTS DOWNTOWN

Bar Louie: Self-described as a “casually cool neighborhood restaurant,” Bar Louie started 21 years ago in Chicago. Amanda Resten, New England marketing manager, describes the menu as American-style with “a little of everything” from tilapia to burgers. There is a section of the menu devoted to sandwiches which are large enough for a meal.

1 Union Station

401-427-0600

www.barlouieamerica.com

The Dorrance: Formally the Federal Reserve, this Historic space is newly renovated and located on the corner of Westminster & Dorrance Streets in Downtown Providence.

Offering 3 Course Pre-Fixe Lunch, Lounge Evenings and power packed snacks. Also available for weddings, special events and private functions.

60 Dorrance Street

401-521-6000

<http://www.facebook.com/pages/The-Dorrance>

Flan Y Ajo: Located on 225a Westminster Street, Flan Y Ajo brings together the spirit of innovation and bonhomie with a menu that celebrates Spanish flavor and history. The first collaborative project of Siobhan Maria Etxeberria and Diego Luis Perez, Flan y Ajo offers an imaginative menu of tapas that honors Spain's flavors and preparations. Flan y Ajo is a BYOB restaurant.

225 Westminster Street

401-573-7253

www.flanyajo.com



THE RESIDENCES
PROVIDENCE

WHAT'S HAPPENING IN THE CITY!

Dunkin Donuts Center—www.dunkindonutscenter.com

1. Disney on Ice: Mickey & Minnie's Magical Journey —*December 28-January 31, 2012*

Providence Performing Arts Center - www.ppacri.org

1. Holiday Pops —*December 2, 2011*
2. Cesar Millan, the dog whisperer —*December 3, 2011*
3. The Nutcracker —*December 9-10, 2011*
4. Cirque Dreams, Holiday —*December 13-17, 2011*

Rhode Island Convention Center—www.riconvention.com

1. RISD Alumni Art Sale —*December 3, 2011*
2. Downtown Jingle 5k and Elves Kids 1k —*December 4, 2011*
3. Canine Pet Expo & AKC Dog Show —*December 8-11, 2011*

PROVIDENCE CITY HALL TREE LIGHTING

- **December 03, 2011**
- **Location:** Bank of America City Center
- **Address:** Two Kennedy Plaza, Providence, RI 02903

Venue: [Bank of America City Center](#)

Bring the whole family and kick off the holiday season at Providence's Annual Tree Lighting in downtown Providence. Music and refreshments will add to the festive atmosphere.



DECEMBER 3, 2011

Join us for special Family Programming at

A Benefit Street Holiday

Schedule of Events

(All activities will take place at the Hope Club, 6 Benevolent St., Providence, unless otherwise stated)

- 9:00 AM Register for all Holiday fun programs
- 9:30 AM Be enchanted by acclaimed storyteller Len Cabral's folktales
- 10:30 AM Make a holiday treat and decorating gingerbread cookies
- 1:30 PM Deck the hall by frosting a gingerbread cookie
- 2 TO 4 PM Jingle all the way on a Side Hill Farm Carriage Ride
- 2:00 PM Rock the day away at the Costume Pet Parade
(Starts at the Hope Club ending at the Providence Athenaeum)
- 4:30 PM Snow Queen Presentation
- 5:45 PM Parade to City Hall, led by the 2nd Rhode Island Regiment
(Meet at the Benefit Street Arsenal, the corner of Meeting & Benefit Street)
- 6:00 PM O Christmas Tree! Join us at the tree lighting with
Mayor Angel Taveras at the Bank of America Skating Center
The Snow Queen will be at the tree lighting to grant children wishes.

**SPECIAL RATE FOR FAMILIES:
TICKETS ARE \$8 PER PERSON.**
*(ticket to house tour not included in the Family
Day ticket price)*

To purchase tickets, visit www.ppsri.org
or call 401.831.7440.

Parents must accompany their children.

PROVIDENCE PRESERVATION SOCIETY



THE RESIDENCES
PROVIDENCE

FLOOR PLAN OF THE MONTH

Residence 2401, B1

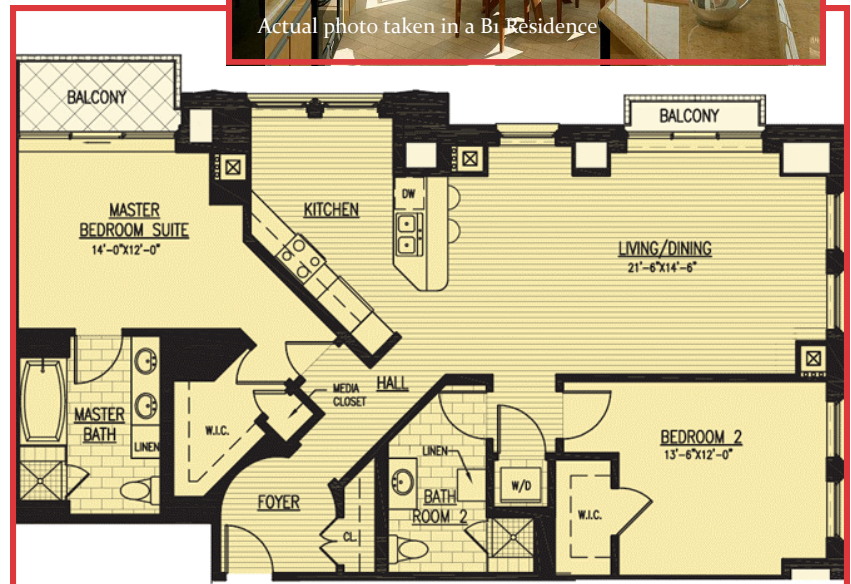
New Release!!!

A beautiful 2 bedroom, 2 bathroom 1416 square foot Residence featuring an open kitchen, dining and living room. A gorgeous master bedroom suite with dramatic views of the Rhode Island State House.

Priced at \$569,900



Actual photo taken in a B1 Residence



PROVIDENCE OFFERS FREE 2 HOUR PARKING

Providence shoppers can park for FREE for up to 2 hours at meters citywide. The holiday program is in place from 10am-6pm, Monday - Saturday until Sunday, January 1. All meters in downtown Providence are included from Steeple Street, west to Route 95; 95 south to 195; 195 east to Point Street; Point Street to Wickenden Street; north on South Main to North Main Street at Steeple Street. Metered parking is also free in other commercial districts throughout the city: Broad Street, Atwells, North Main Street, Olneyville Square, South Main Street, Wayland Square, Hope Street, Wickenden/Ives, and Thayer Street.

Visit parkdowntownprovidence.com for more information.



THE RESIDENCES
PROVIDENCE

PROVIDENCE GOES RED IN OBSERVANCE OF WORLD AIDS DAY

The Residences Providence will join buildings in cities across America illuminating our tower in red as part of **(RED)**, a global initiative to raise awareness in the fight against AIDS.

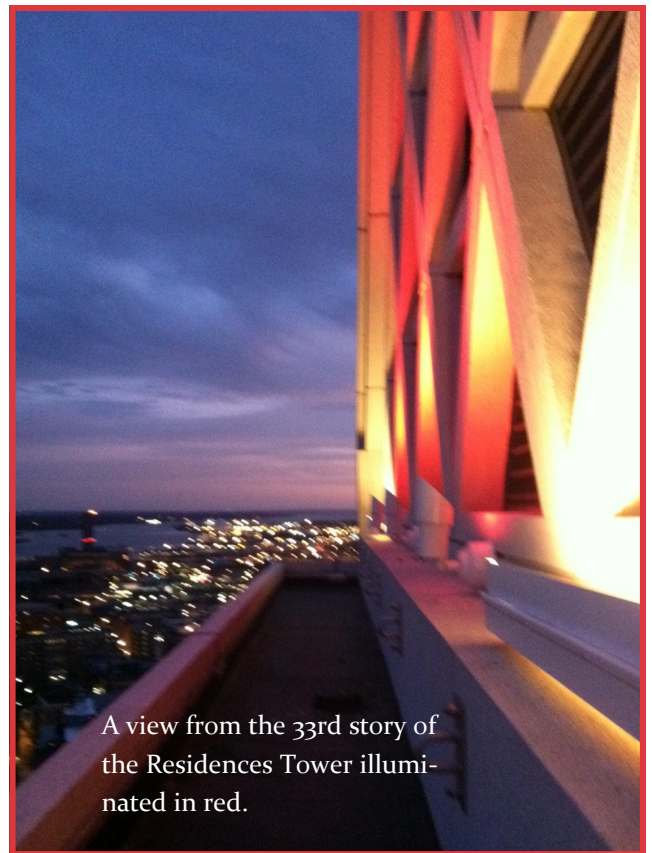
Mayor Angel Taveras invites you to join him for a special World AIDS Day observance:

Thursday, December 1 at 6PM

On the 18th floor of the Providence Biltmore Hotel.

The ceremony will include the First Lady of Rhode Island Stephanie Chafee, a guitar soloist, musical groups, poetry reading and remarks from various community leaders and doctors

including representatives from AIDS Care Ocean State, AIDS Project RI, AIDS Task Force of Jewish Alliance, RI Department of Health, Miriam Hospital and Roger Williams Medical Center.



A view from the 33rd story of the Residences Tower illuminated in red.



THE RESIDENCES
PROVIDENCE

2011 HOLIDAY SEASON AT THE RESIDENCES

Save the Date!

Our 4th annual Holiday Party is scheduled for Wednesday December 14th starting at 6pm. Formal invitations coming soon!

Holiday Decorations

Holiday decorations will be going up in The Residences Lobby on the week of December 5th.

Donation Box

There will be a donation box for Crossroads RI in the mailroom of the Lobby for the month of December. Crossroads Rhode Island, formerly Travelers Aid of Rhode Island, has been providing help to the needy in Rhode Island since 1894. Crossroads provides care to homeless families, women and men in Rhode Island.

Donations of the following items would be greatly appreciated:

- Summer items such as new flip flops and sunscreen for women and children
- Non-perishable food items
- Personal care items (such as travel size shampoo, soap, toothpaste, feminine hygiene products, hand sanitizer)
- Large men's and women's sweatpants and sweatshirts
- New socks and underwear for children and adults
- Basic art supplies

Call Kelly Lee for more information or to find out more about Crossroads Rhode Island. (401) 598-8282